

/

-

/

-

2021

2021

()-

2021

2021

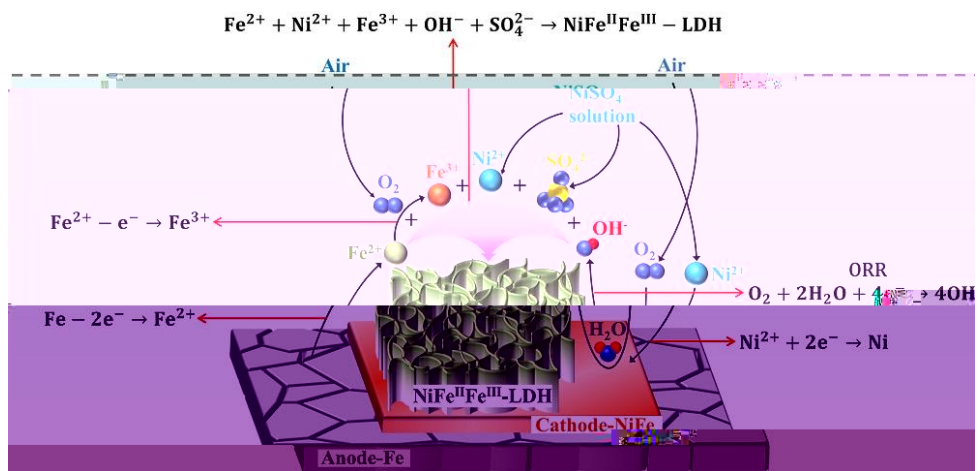
3D

OER
NiFe-LDH@IF
OER

OER
LDH@IF

NiFe-LDH@IF
NiFe-LDH@IF
NiFe-LDH@IF

NiFe-
OER



11 23

NiFe Layered Double Hydroxides Grown on a Corrosion-Cell Cathode for Oxygen Evolution
Electrocatalysis
Advanced Energy Materials
2019

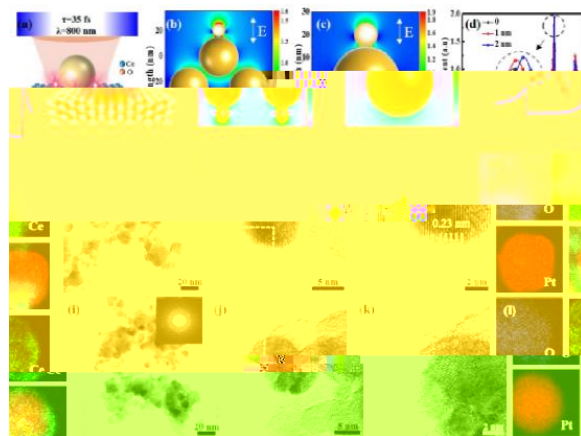
<https://onlinelibrary.wiley.com/doi/10.1002/aenm.202102372?af=R>

(SMSI)

Pt CeO₂ CeO₂ CeO_x SMSI CeO_x

Pt

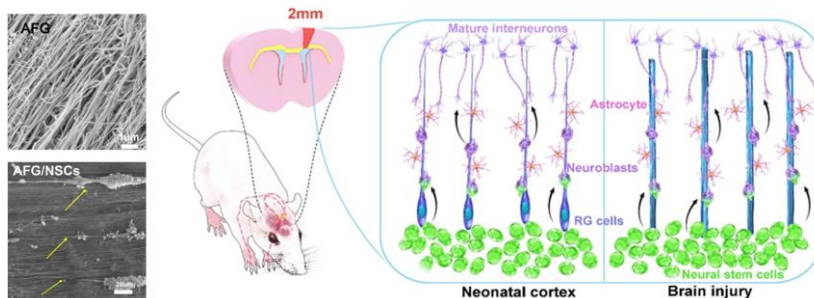
Pt/TiO ₂	Pt/Al ₂ O ₃	Au/MgO	Pt/SiO ₂	SMSI	-	Au/TiO ₂	Pd/TiO ₂
						SMSI	
ultrafast laser	11	18				Strong metal-support interactions induced by an	NatureCommunications
https://doi.org/10.1038/s41467-021-27000-5						2017	2018



SMSI (a-d) FDTD e-h
 Pt/CeO₂ TEM Mapping; (i-l) Pt/CeO₂ TEM Mapping.

AFG

AFG



AFG

“

” Structural alignment guides oriented migration and differentiation of endogenous neural stem cells for neurogenesis in brain injury treatment 12 3

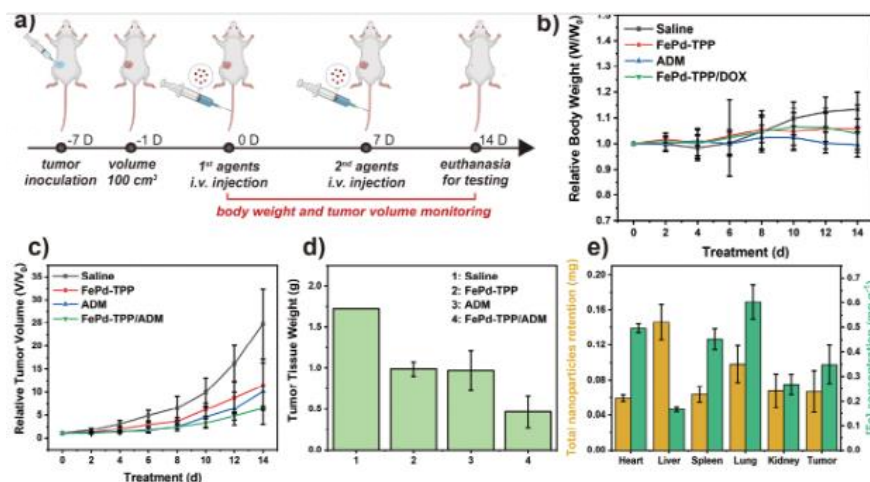
Biomaterials 2018

<https://doi.org/10.1016/j.biomaterials.2021.121310>

Fe_{0.037}Pd_{0.963}
Fe²⁺

Pd
Adriamycin

V_{max} = 1.69 × 10⁻⁹ M s⁻¹
H



“Ultra-Sensitive Iron-Doped Palladium Nanocrystals with Enhanced Hydroxyl Radical Generation for Chemo-/Chemodynamic Nanotherapy” 12 4

AdvancedFunctional Materials

20

<https://onlinelibrary.wiley.com/doi/full/10.1002/adfm.202107518>

MOF Fe - Fe

ORR/OER

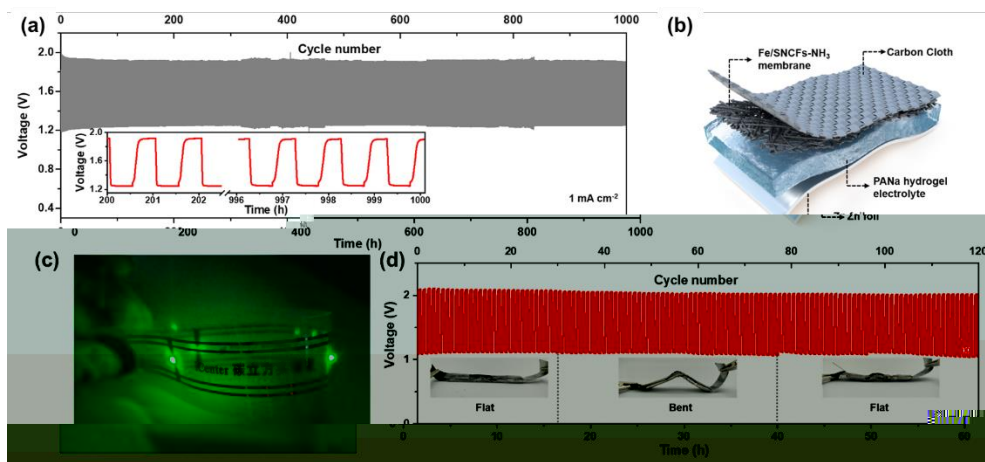
NH₃ 9.5 Fe-N4/C

Fe-N4/C NH₃ Fe-N4/C

ORR OER Pt/C Fe/SNCFs-

0.89 V 70.82 mV dec⁻¹ 255.84 mW cm⁻²

NH₃ 1 mA cm⁻² 1000



(a)

(c)

LED

(d)

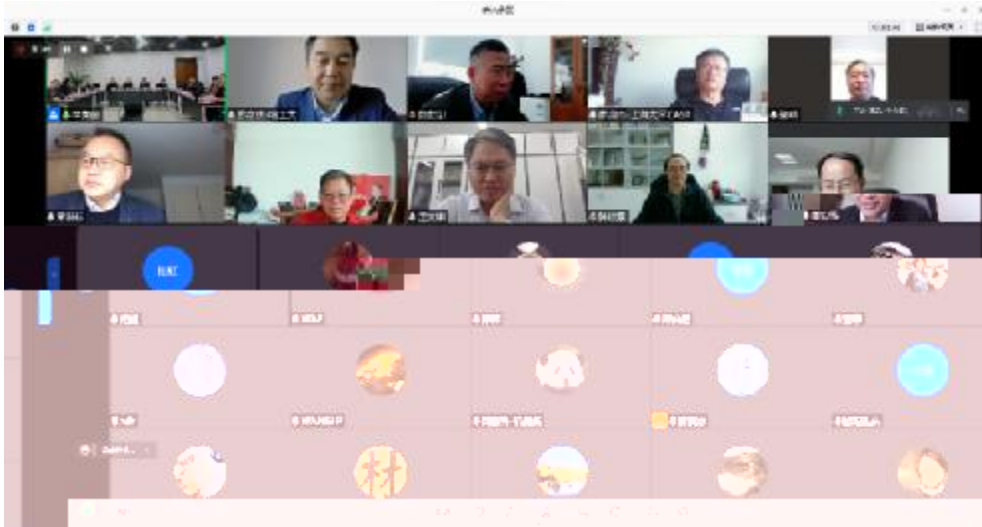
(b)

Fe-N4/C

1000

Atomic Fe-N4/C in flexible carbon fiber membrane as binder-free air cathode for Zn-air batteries with stable cycling over 1000 hours

Advanced Materials



12 2

“ ”

“ ”

,

12 16

2021

“ ” “ ”



12 12 ()-

12

” “ ”

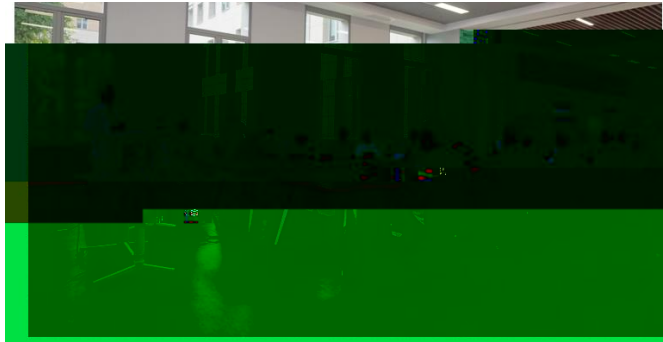


2021

2021 12 25

2020

2021



27

12

40

“ ”

” “

” “

“

”

” “

” “



2021 12 28-30

3000

400

”

”

5

——“

“

”

“

8848

200%



3D

11 1 12 11

3D

3D

3D

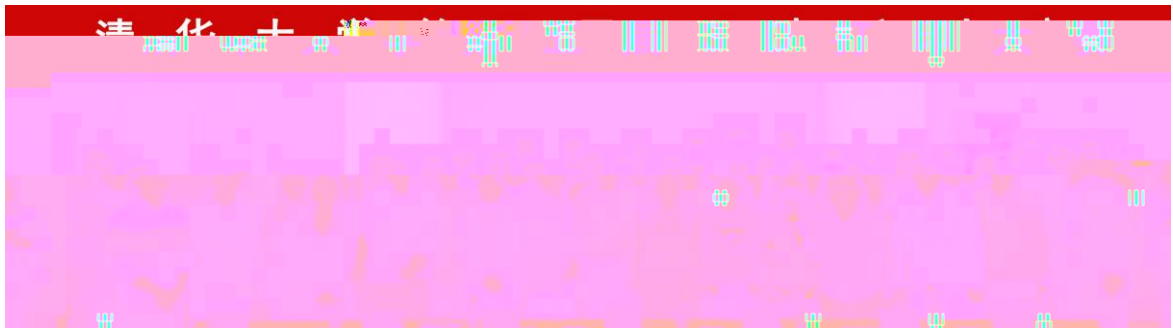
3

6

9

8

CEO



11 15

A205

“ ” 2035

11 22

“ ”

“ ”

“ ”



12 3

C202



12 7

A211

30

2018

“ ”
2021 5

11 29

A211

62784560

clx@tsinghua.edu.cn

C201